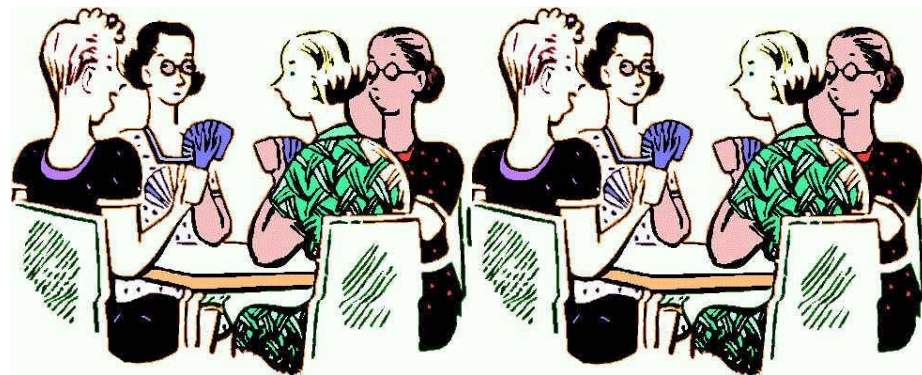


Kudzu Playhouse

Presents

The Octette Bridge Club



Written by

P. J. Barry

Directed by

Adriana Bosna Warner

March 5-April 4, 2010

Friday and Saturday at 8pm

Sunday afternoon at 3pm

For reservations call 770-594-1020

www.kudzuplayhouse.org

Tickets are also available online



2010 Kudzu "Sprouts" shows 2010

All seats are \$6.50
For children 3 to 10 years old

Bugz

April 1-April 17, 2010

There's going to be a picnic and everyone is pitchin' in...the Lady Bugs are in charge of proper etiquette, the Army Ants will handle security, the Fireflies are in charge of lighting, and entertainment will be provided by the Bumble Bees. Looks like everything is set! But what's this?! The Stink Bug wants to come too! Buzz on over to the country-style hoedown and help the critters rescue the party!

Goldilocks and the Three Bears

September 9-September 25, 2010

Lost in the woods, tired and hungry, Goldilocks spies an empty cottage. There's porridge to slurp, chairs to bounce on and beds to doze in. Back from the woods, tired and hungry, three bears return to their cottage. But who's been slurping in their porridge and bouncing on the chairs? And hang on a minute, who's that dozing in the bed?

The Toymaker and His Magic Shop

December 1-December 18, 2010

When the Master Toymaker sprinkles a touch of Magic Doll Dust on the wonderful dolls he has made, they come to life in a surprising way. They realize how unusual they are when they find they can walk, talk and breathe. The Master Toymaker realizes it too, and decides he does not want to sell them. They are too wonderful to be "mussed, crushed and handled" by loving children. The dolls, however, take the opposite view. Dolls are meant to be loved, and these dolls don't want to miss anything. With the aid of an unusual customer who visits the toy shop, and additional aid from the audience, the dolls achieve their desire to be given to children at Christmas.

Kudzu Playhouse is looking for an ensemble of actors who can perform during the day for school shows and daytime matinees for the 2009 season.

Call 770-594-1020 or email us at kudzuplayhouse@aol.com

Wish list: Picnic Tables,

Paper (regular white and card stock for printing), **Volunteers**, vintage clothing, unique costume items, **volunteers**, small tables, chairs, wooden chairs, **volunteers**, stools, pictures, mirrors, children's dress up hat and Halloween costumes (especially fairy tale costumes for our classes and camps) table cloths, curtains, silk flowers & greenery (especially trees), odd or unusual furniture pieces, Corporate Sponsors, Grant Writers and oh yeah: volunteers!

2010 SEASON OF PLAYS Kudzu Playhouse 2010 SEASON OF PLAYS

10743 Alpharetta Highway, Brannon Square, Roswell, Georgia 30076

Jake's Women

By Neil Simon Directed by Sheila Oliver

January 15-February 14, 2010

America's premier comic playwright makes another hilarious foray into the world of modern relationships. Jake, a novelist who is more successful with fiction than with life, faces a marital crisis by daydreaming about the women in his life.

Octette Bridge Club

P. J. Barry Directed by Adriana Warner

March 5-April 4, 2010

A delightful, sentimental comedy about American life in a by gone era. On alternate Friday evenings, eight sisters meet to play bridge and gossip. A delightful, funny, moving glimpse of the sort of lives we are all familiar with - our own.

Forever Plaid

By Stuart Ross Directed by Wally Hinds and
Spencer G. Stevens

April 23-May 23, 2010

One of the most popular and successful musicals in recent memory, this deliciously goofy revue centers on four young, eager male singers killed in a car crash in the 1950s on the way to their first big concert, and now miraculously revived for the posthumous chance to fulfill their dreams and perform the show that never was.

Chaim's Love Song

By Marvin Chernoff Directed by Lane Teilhaber

June 11-July 18, 2010

What could a young, homesick teacher from Iowa and a Jewish, retired New York mailman possibly have in common beyond sharing a park bench in the middle of Brooklyn? In this stirring dramatic comedy, Kelly Burke finds herself feeling alienated and alone after following her new husband to Brooklyn for his 9-month-long research trip. Gleaning a bit of comfort in the routine and solitude of sitting on a particular park bench, Kelly is taken aback when Chaim Shostky sits down and introduces himself. At first, Kelly listens with guarded interest as Chaim recalls a menagerie of loved ones through whom he shares his life story with her. But something about Chaim makes Kelly want to share her life with him, too. Over four days, their ongoing conversation blooms into a love song for life - a stunning tale of friendship, hope, survival and triumph.

The Nerd

By Larry Shue Directed by Wally Hinds

August 20-September 19, 2010

This extraordinarily inventive, side-splitting comedy is one of the funniest plays ever written. The action centers on the hilarious dilemma of a young architect who is visited by a man he's never met but who saved his life in Vietnam—the visitor turning out to be an incredibly inept, hopelessly stupid "nerd" who outstays his welcome with a vengeance. "Shue delivers a neatly crafted package that uses some classic comic forms to bring the audience to its knees, laughing."

Meet My Husbands

By Fred Carmichael Directed by Greg Fitzgerald

October 8-November 7, 2010

This comic look at advertising and the media finds Elaine Scott, an advertising executive whose position is in jeopardy, in Florida to meet the Mulgrews, European clients she must sell on adopting her agency's campaign for their Swiss Mountain Sausages. Mulgrew insists that the campaign and all those connected with it must reflect wholesome family values. After Elaine hires a beach bum, Tim Billings, to pose as her spouse, her new husband arrives at the hotel. The balcony between suites becomes a comic causeway with the sausage campaign hanging in the balance. Who IS Tim Billings? Why is that newspaper woman prying about? Why has Elaine's opportunistic former husband appeared on the scene? And will the sales pitch succeed? A multiple surprise ending caps this hilarious foray into the world of advertising.

A Christmas Carol

By Wally Hinds Directed by Wally Hinds

November 26-December 24, 2010

See website for dates and times

Charles Dickens shows us Ebenezer Scrooge as he falls asleep in his dingy, cold quarters on Christmas Eve. The old miser is visited by three ghosts, each revealing to Scrooge his wrong doings and what will happen if he continues in his evil ways. This traditional holiday classic for the whole family is filled with old English Christmas Carols guaranteed to fill you with the Christmas spirit and warm your heart.

All shows on Friday and Saturday evenings at 8pm are \$19.50 for adults
and \$17.25 for students and Senior Citizens (60 and over)
All shows on Sunday afternoon at 3pm are \$15.00 for adults and
\$13.00 for students and Senior Citizens (60 and over)

2010

Kudzu Family Playhouse

2010

10743 Alpharetta Highway, Brannon Square, Roswell, Ga. 30076

Tom Sawyer

Adapted from the book by Mark Twain

April 3-May 2, 2010 Saturday and Sunday at 2 pm Saturday April 17 and 24 at 7:00pm

This is the classic story of Tom, Huck, Aunt Polly, and of course, Injun Joe. All the wonderful classic scenes that have become so familiar over the years come alive on stage; whitewashing the fence; the grave yard scene with Muff Potter and Doc Robinson; Tom, Huck, and Joe's adventures on Jackson Island; and Becky and Tom's encounter with Injun Joe in the cave.

Rumplestiltskin

Adapted from the Grimms Fairy Tale by Jeannie and Wally Hinds

June 3-26, 2010 Thursday, Friday and Saturday at 11am Summer Schedule

The miller brags about his beautiful daughter and the stories get more and more fantastic until he claims she can spin straw into gold. The King and Queen of Queenana, hear the story and send two bumbling barrons into the kingdom to find the miller's daughter and bring her to the castle so she can make them rich. In the dungeon she meets a little man who says he can spin the straw into gold – but his price is very high. This light hearted adaptation has funny characters, a handsome prince, a royal wedding, and if you throw in some help from the audience and a happy ending, it adds up to big fun for the whole family.

Disney's AladdinMusic by [Alan Menken](#) /Lyrics by [Howard Ashman](#) and [Tim Rice](#)Book Adapted and Additional Lyrics by [Jim Luigs](#) /Music Adapted and Arranged by [Bryan Louiselle](#)

July 8-July 31, 2010 Thursday, Friday and Saturday at 11am

Welcome to Agrabah, City of Enchantment, where every beggar has a story and every camel has a tail! All of your favorite characters are here in this stage adaptation of the Disney hit, including Aladdin, Jasmine, and of course, the Genie. Filled with magic, mayhem, and flying carpet rides, audiences' spirits will soar with excitement. Most of all, the tuneful, Academy award-winning score with songs including "A Whole New World" and "Friend Like Me" will certainly make this musical a favorite for many years to come!

Anne of Green Gables

Adapted by the Family Playhouse from the turn-of-the century novel by L. M. Montgomery.

August 28-September 26, 2010 Saturday and Sunday at 2 pm Saturday, Sept 18 & 25 at 7:00pm

The time is 1908. The place is Avonlea, Canada. Green Gables is the home of lovable Matthew Cuthbert and his stern sister, Marilla. When Marilla decides to adopt an orphan boy to help Matthew with his farm work, the orphanage makes a mistake and sends instead a high-spirited redhead called Anne Shirley. With a knack for trouble and misadventure, her irresistible spunk steals everyone's heart. We follow Anne's strenuous but brimful school-days with Mr. Phillips, her attachment to her bosom friend, Diana Barry, her feud with Gilbert Blythe, her contest with Josie Pye, and her undying loyalty to Matthew and Marilla. Through her all too vivid imagination and romantic heart, we glimpse the inmost joys of a girl who only marks the hours that shine, as she struggles toward fair maidenhood.

How I Became a Pirate

Based on the book by Melinda Long/Book/Music and Lyrics by Janet Vogt and Mark Friedman

October 9-November 7, 2010 Saturday and Sunday at 2 pm Saturday, October 9 at 7:00pm

AARRRRGH! Really, who doesn't want to be a pirate? When young Jeremy Jacobs and his exceptional digging skills are recruited by Captain Braid Beard for treasure burying purposes, Jeremy thinks the pirate life is for him. Until he realizes that the simple things in life, like a kiss and a warm tucking in at night are those that are most important. A story of adventure and finding one's own heart - a path that can't be found on any treasure map.

A Christmas Story

By Jean Shepherd

November 27-December 24, 2010 Saturday and Sunday at 2 pm

Saturday evenings, December 4, 11 & 18 at 7:00pm

Tuesday, December 21/Wednesday, December 22/Thursday, December 23 at 7:00pm

Friday, December 24, Christmas Eve at 2pm

Jean Shepherd's memoir of growing up in the Midwest in the 1940's follows 9 year old Ralpie Parker in his quest to get a genuine Red Ryder BB gun under the tree for Christmas.

All seats are \$8.75

~~~SEASON TICKETS ARE ON SALE NOW~~~

# Kudzu Playhouse Contributors 2009-

## ANGELS

\$2500-5000+

Jeff Boyce  
Jeannie and Wally Hinds  
David Shelton  
Dorothy Sykes

## BENEFACTORS

\$1000-2499

Chris Arapoglou  
Kathy and Rial Ellsworth  
Hardin Construction  
Jerry Harlow  
Lane Teilhaber

## DONORS

\$500-999

CSD Incorporated  
Greg Fitzgerald  
Kathy Manning  
Brink Miller  
Sheila Oliver  
Jim and Mary Beth Pettit  
Roswell Junior Woman's Club

## PATRONS

\$100-499

Turpin Ballard and Cindy Nolan  
Bradley R. Corbin  
Harold Henry  
Ellen Keel  
Martha Kennedy  
Colleen Kiltz  
Rick and Marleen Kraich  
Roy Lantz  
Leon Lassiter  
Mary Maxwell  
Barbara McFann  
Susan Moore  
Bill and Nancy Shelton  
John and Candy Spahr  
Ned Thurman  
Carolyn Renee Voige  
Jennifer Winterscheidt

## FRIENDS

\$1-99

Laura Adams  
Annonomys

Anne Batson  
Stacy Bowers  
Suzanne Clark

Jeri Clay  
Laurie Croft  
Rick Durnad

Bronwyn Glatzberg

Cindy Grady  
Catherine Higgins  
Maureen Krivo

Dot and Calvin McAlvin

Paul Olson  
Jackie Prucha

Dalton and Asli Reinsch  
Barry and Chris Rooker

Mike and Linda Rush  
Kathy Simmons

Brian and Colleen Twoomy

Debby Wachsman  
Joyce Whitley

## SUBSCRIBERS

2010 Season Tickets

Chris Arapoglou  
Judy Batson  
Paul Burlock

Karen Chestnut

Jordan and Maureen Colletta

Cynthia Cook  
Barbara Courtney  
Kat Donnelly  
Rita Echart

Mr and Mrs Vito Fenello

Marie Fremin  
Marcia Gamboa  
Frank Garro

John and Lisa Griffin

Mr. and Mrs. Don Harrivel

Jeannine Jones  
Jan and Earl Kramer

Michael and Shannon Lohbrunner

Angela Martello  
Pamela Paugh

Joanne and Bob Petit

Mr. and Mrs Terry Petrukovich

Mary and Philip Sittler  
Bettie Southern

Mr and Mrs James Turner

# Kudzu Playhouse Staff

|                                           |                                                                                                          |
|-------------------------------------------|----------------------------------------------------------------------------------------------------------|
| <b>Managing Director</b>                  | <b>Jeannie Hinds</b>                                                                                     |
| <b>Artistic Director</b>                  | <b>Wally Hinds</b>                                                                                       |
| <b>Artistic Director of Kudzu Sprouts</b> | <b>Leslie Kelley</b>                                                                                     |
| <b>Technical Director</b>                 | <b>David Shelton</b>                                                                                     |
| <b>Box Office Manager</b>                 | <b>Suzanne Clark</b>                                                                                     |
| <b>Web Host</b>                           | <b>Snapper Morgan</b>                                                                                    |
| <b>Web Master</b>                         | <b>Rial Ellsworth</b>                                                                                    |
| <b>Volunteer Coordinator</b>              | <b>David Shelton</b>                                                                                     |
| <b>Kudzu Public Relations</b>             | <b>Cathy Ray</b>                                                                                         |
| <b>Drama Teacher s</b>                    | <b>Rykie Belles, David Shelton, Mary Sittler and Cathy Ray</b>                                           |
| <b>Outreach Drama Teacher</b>             | <b>Leslie Kelley</b>                                                                                     |
| <b>Adult Acting</b>                       | <b>Adriana Warner</b>                                                                                    |
| <b>Summer Camp Lead Counselors</b>        | <b>Karen Rooker and Lindsay Olson</b>                                                                    |
| <b>Junior Camp Counselors</b>             | <b>Mitchell Miller, Kimberly Maxwell</b>                                                                 |
| <b>Friends of Kudzu Secretary</b>         | <b>Marlene Kraich</b>                                                                                    |
| <b>Marketing Committee Chairman</b>       | <b>Robin Goodfellow</b>                                                                                  |
| <b>Donations</b>                          | <b>Chip Decker</b>                                                                                       |
| <b>Costume Team Leaders</b>               | <b>Sheri McGuinness, Jan Kramer<br/>Mary Ritenour, Geri Goodfellow<br/>Mary Maxwell and Karen Rooker</b> |

**Kudzu Playhouse**, Inc. is a non-profit, tax exempt organization. Kudzu Playhouse is a member of the Atlanta Coalition of Performing Arts, Fulton Arts North, The Historic Roswell Convention and Visitors Bureau, Theatre Communication Group and the American Alliance for Theatre in Education.

We wish to extend our most heartfelt thanks to the many parents, friends and supporters for their hard work and dedication. They have been there with us giving of their time, money and support. Without them, AND YOU, this theatre would not exist.

## Kudzu Mission

Kudzu Playhouse is a metro-Atlanta community theatre located in Roswell, Georgia. Kudzu Playhouse is a community theatre in the truest sense and its mission is to provide cultural and educational enrichment for the whole family through entertaining and educational theatrical performances and through dramatic instruction. The theatre maintains its commitment to the community to provide excellent theatrical productions and to enrich and create community involvement by providing opportunities for theatrical participation (technically and artistically) for individuals at all levels of experience and ages.

*Director's Notes:*

*Though this play takes place over a period of ten years, 1934 to 1944, we know these ladies, "a sentimental group portrait".....as nostalgic as a "Saturday Evening Post" cover, who meet every other Friday night for home-baked pie, titillating gossip, banter and bridge. The real comedy and drama begin, however, when they put down the cards. There's a "storm" brewing, and it is not just the "great depression" or "World War II". What are the "secrets" they hide from each other, eight sisters-close, and yet....? Listen carefully to the story we are about to unfold for you tonight. We have prepared it with great care and love because we think it speaks to what we are all struggling with even today, especially today. We have a multitude of marvelous means of communication.....and yet....? Do we really "know" each other better?*

*Adriana Bosna Warner*

**Please check out the beautiful art work in the lobby**

**Oil and Acrylic by Maureen Engle**

The paintings in Kudzu lobby are by local Roswell artist Maureen Engle. She is known for her loose, impressionistic style whether painting in oil, acrylic or watercolor. Her specialties are palette knife painting and watercolor portraiture. Ms. Engle teaches at Chastain, Roswell Visual Art Center and the Alpharetta Art Center. She also conducts fun workshops and offers private lessons. If you are interested in a painting, a class or workshop, please contact her at via email [engle.clan@gmail.com](mailto:engle.clan@gmail.com) or her cell (770)633-7809. Ms. Engle's three oldest children have all been proud to perform in Kudzu family productions and her youngest, David, age 9, just auditioned for the first time!

A percentage of the sale goes to support Kudzu Playhouse.

## Kudzu Wants YOU!!!

COSTUMES.....PROPS.....STAGE MANAGING....TECNICAL....SET BUILDING  
ANSWERING THE PHONES.....PUBLICITY.....MARKETING.....DIRECTING  
ACTING....FUNDRAISING....PAINTING....CONCESSIONS...TAKING TICKETS  
CLEANING OUT THE BACKSTAGE.....PACKING BOXES.....ETC.....ETC

If you can wield a hammer or a paintbrush, or climb a ladder to hang a light; or if you know which end of a drill holds the bit, or how to run lights or sound or be a stage manager; or if you can help with set dressing , or hunt for props, or hem a skirt, or be a crew member; or man the concession stand, or if you would like to learn to do any of these things.....

Call Jeannie Hinds or Suzanne Clark at 770-594-1020, It's a great way to meet and have fun with new people, and you may find that the world of community theatre is right up your alley.

# Kudzu Playhouse

Managing Director  
JEANNIE HINDS

Managing Artistic Director  
WALLY HINDS

Presents

## *The Octette Bridge Club*

Written by **P. J. Barry**

Directed by **Adriana Bosna Warner**

### Production Staff

STAGE MANAGER ..... Kathy Ellsworth  
SET DESIGN ..... Wally Hinds  
LIGHTING DESIGN ..... David Shelton  
COSTUME DESIGN ..... Mary Ritenour  
MUSIC DESIGN ..... Rial Ellsworth  
PROPS DESIGN..... Debby Wachsman  
BOARD OPERATOR..... Diane Plonk  
SET CONSTRUCTION..... Wally Hinds, David Shelton, Corey Hinds

### Cast of Characters

Martha..... Candy Cain Spahr  
Mary ..... Minnie Tee  
Connie..... Tam Sager Gandert  
Nora ..... Amanda Libbey  
Alice ..... Barbara Hawkins-Scott  
Ann ..... Abby Avery  
Lil..... Lorie Dunn  
Betsy ..... Lynne Jenson  
Robert Foster, the Photographer ..... Wes Ball

*There will be one fifteen minute intermission*

The action takes place in the living room of Ann (Mrs. John Conroy) in a Rhode Island town

ACT I

A Friday night in late October, 1934

ACT II

The Night before Halloween, 1944

*Food and Drinks are allowed in the theatre-*

*Please deposit all trash in the trash cans at the back of the theatre.*

Cameras and Recording Devices are absolutely prohibited in the theatre. Also, as a courtesy to the actors as well as the other patrons, please make sure all cell phones and pagers are turned off and save texting for after the show.

“Produced by special arrangement with Samuel French, Inc.”

Kudzu Playhouse would like to express their gratitude to George Deavors, Dunwoody Stage Door Players, Act 1 Theatre, Georgia Ensemble, Annie Cook and Blackwell Theatre.

## Cast Biographies in Order of Character's Birth

**CANDY CAIN SPAHR** (*Martha*) Just when Candy thought she had put away her acting shoes for good to concentrate on writing and directing, along came an opportunity to play a role she couldn't resist. It is fun to play the meanies! Candy also appreciates the opportunity to work once more with the exceptional Adriana. And she is delighted to be working with all her sublimely talented stage sisters, and the one guy isn't bad either. Candy hopes you enjoy this show and will come back to see *A Rail Tale*, premier of a mystery-comedy she has written which opens at Kudzu in late April, to be directed by Jeannie Hinds. Candy would like to dedicate this performance to her wonderful real life sister, Sugar, the eldest of the eight children in *her* family (Candy is #2), with love and with gratitude for her being nothing like Martha.

**MINNIE TEE** (*Mary*) The role of Mary Margaret Donovan brings Minnie Tee to Kudzu for the first time. She is delighted to be appearing here and being directed by Adriana Warner. Kudzu has a reputation for producing quality productions and I know you'll agree that *The Octette Bridge Club* is no exception. Minnie has a very long list of past performances and venues; too many to mention and find a favorite. In addition to her many years appearing in stage productions, Minnie has also appeared on television, in film and works with Emory Medical Students and staff as a Standardized Patient several times a year. She also has a CD of favorite songs entitled "Maximum Minnie." The CD can be purchased on the internet at [cdbaby.com/cd/minniet](http://cdbaby.com/cd/minniet) or directly from Minnie. Minnie thanks the wonderful cast and crew for making rehearsals enjoyable, her husband for being so patient and supportive and the higher power that gives her strength when she needs it the most.

**TAM SAGER GANDERT** (*Connie*) Tam is delighted to be at performing at Kudzu. Her other Atlanta roles include Margaret Civil in *A Perfect Ganesh* at Theatre Decatur, Lita Encore in *Ruthless* and Julia in *Lend me a Tenor* at Onstage Atlanta, Grandma Kurnitz in *Lost in Yonkers* at Stage Door Players, and Clarissa in *A Spider's Web* at the Aurora. Prior to moving to Atlanta, Tam lived in Palm Springs, CA where she hosted *Desert Nightstyles*, did voiceover work and performed with the Valley Player's Guild and the Desert Rose Theatre. During her last two seasons in the desert, she performed at Liveri's Celebrity Room, creating the role of Misty Dawn in *Murder, Mayhem & Mystery: A Musical*.

**AMANDA LIBBEY** (*Nora*) Amanda is happy to be back at Kudzu in this wonderful production. She was last seen here in *Taking a Chance on Love*, in 2008. Last year, she appeared in Gypsy Theatre's, *A Bad Year for Tomatoes*, in Cumming. Amanda was absolutely thrilled and grateful to be cast in this play as working with Adriana was one of her goals! This experience has been a treat for her, and she hopes you will enjoy the work of this talented cast and crew as much as she has.

**BARBARA HAWKINS-SCOTT** (*Alice*) Barbara has appeared on Atlanta area stages in *The Shadow Box*, *Best Little Whorehouse in Texas*, *Working*, *The Fifth of July* and others. She has directed or produced more than fifty shows for The Aurora Theatre, Downright Theatre, Onstage Atlanta and the Neighborhood Playhouse, Onionman Productions and others. She manages the recording studio of the MediaVoice division of Syntellect, Inc. Barbara has been selected as the signature voice of several Fortune 500 companies, including a world leader in appliance manufacturing, cable television providers, pharmaceutical manufacturers and more. Barbara holds a Bachelor of Arts in Performing Arts from Otterbein College

**ABBY AVERY** (*Ann*) Well... following the rules and being the peacemaker is not the norm for Abby, but she has enjoyed the challenge to bring honesty to Ann in her feeble attempts. Thanks to Adriana for her unending patience, wisdom and unselfishness in sharing her love of the craft! Some of Abby's recent roles were in *Yes, Virginia there is a Santa Claus*, *Secret Garden*, *Ten Little Indians* and *Hot Chills*. When not on stage, you may see Abby at a local Roswell park walking her three dogs, who "are ever faithful". Mom and Dad, thanks for your support and love to Wes.

**LORIE DUNN** (*Lil*) Lori is thrilled to be making her Kudzu Playhouse debut with such a talented cast and director. Recent roles include Julie Cavendish in *The Royal Family* (Alliance Theatre Acting Program), Sarah Good in *The Crucible* (Oglethorpe University Theatre) and Dawn in *Return Engagements* (Polk Street Players). But her favorite role is "Future Stage-Mom" of her daughter Clara who –even at 3 years old – shows a tremendous flair for drama. Many thanks to Adriana for the opportunity to play Lil – even though my only public singing credit is karaoke after a few drinks! Love to Tom – the song in my heart.

**LYNNE JENSON** (*Betsy*) Seeking my own buried life and that of my characters has long been my goal; acting provides a remarkable tool for unearthing layers and resulting richness in these characters and in my own life. After experiencing a lifetime on and off stage I daily startle anew by what I uncover in myself and a particular character, even when playing a character more than once. Born during a British blizzard and having trod the boards in New York, London, Russia and throughout the US and Canada, I will swear out an affidavit that laughter and sorrow share one language that is spoken and understood by all human souls, transcends cultural boundaries and unites people in ways wars, politics and religions never have or will. To all actors, musicians and writers who labor lovingly at this craft: find your soul first, seek God in whatever manner brings you closest to the divine, but most of all, in the words of the Bard, "play on" and on. Only by so doing will you uncover your authentic self. And only your authentic self is capable of doing real good in this crazy world.

**WES BALL** (*Robert, the Photographer*) Wes is a native Atlantan. He is proud to have the opportunity to work with everyone here at Kudzu. This is the second play Wes has acted in and thanks Adriana for her advice and incredible attitude and love of life! Wes wishes to thank, Mom and Dad, Mr. & Mrs. Avery and last but not least, Abby. Three kisses babe!

## Production Staff Biographies

**ADRIANA BOSNA WARNER** (*Director*) Adriana has been acting, directing and teaching theatre for more than half a century - on three continents. She studied acting at the American Academy of Dramatic Arts in N.Y.C., The Theatre School at Carnegie Hall with Frances Letton and Jason Robards, The HB Studios with Uta Hagen, and received her M.A. in theatre from S.U.N.Y. – Binghamton. In 1986 she came to Atlanta as Director of the Academy Theatre's School of Performing Arts, also appearing in that company's productions of *The House of Bernarda Alba* and *Les Liaisons Dangereuses*. In 1993 she was hired as Artistic Director of Stage Door Players in Dunwoody, where she directed *The Lion In Winter*, *Camping With Henry and Tom*, and *Shirley Valentine*, and recently was invited back to direct *Wrong Turn at Lungfish*. She's also been lucky enough to sneak in a few acting "gigs" around town at Actor's Express, Horizon Theatre, Theatre Gael and Georgia Ensemble Theatre. Adriana is eternally grateful to Wally

and Jeannie Hinds for inviting her back each year to “play” with them here at the Kudzu Playhouse, where, among many others, she has directed *Sylvia*, *Later Life*, *Eleemosynary*, *Same Time Next Year*, *Enchanted April* and the Metropolitan Atlanta Theatre Award winning musical of the 2009 Season – *Man of La Mancha*. She sends her deepest gratitude, also to this gallant, gifted Cast, and hard working Crew, Designers and “various magicians” who made it all happen with such grace and good humor. She dedicates this production to her beloved nieces, great-nieces and great-great nieces, one and all, Irish/Italian/Americans of great wit, charm and talent. Mille Grazie!

**KATHY ELLSWORTH** (*Stage Manager*) Kathy is delighted to be back at Kudzu and working with Adriana. Thanks to a wonderful cast and crew. With especial thanks to Rial for his help. May all your bids be 4 no trump.

**DAVID SHELTON** (*Lighting Design*) David is proud to be here at Kudzu Playhouse for over two years and 40+ shows. The technical challenges and hands-on work brings fun to his day. He's also thankful to his parents for introducing him to theatre all those years ago. Enjoy the show.

**DEBBY WACHSMAN** (*Props Design*) Debby is always thrilled to be working here at Kudzu Playhouse where she first appeared on stage last year in *Man of La Mancha*. She then performed in *Oliver* at Theater on Main. Her final performance of the year was as Mother Goose in Kudzu's production of *Babes in Toyland*. Between performances Debby did props and assisted with costumes for *Teachers the Musical*. She is excited to be doing props once again, taking her first steps into stage managing and working with Cathy. Thanks for being a friend, Cathy. And Thanks to Adrianna for this opportunity and for never being more than a phone call away. Three cheers for the Octette ladies. It has been a pleasure. Thanks to Mom and to my Kudzu family for all their support and understanding. Enjoy the show.

**DIANA PLONK** (*Tech Princess*) This is Diana's first performance in a play and she is very excited to be with such a fun and experienced staff. She began ushering at the Roswell Theatre three years ago and feels in love with acting and the plays. She just completed her first acting class playing the part of Elsa in *Dispatches from Hell*. She is thrilled to be playing Mrs. Harper in *The Adventures of Tom Sawyer* and would like to thank David Shelton for giving her this opportunity and the chance to tech the play, *The Octette Bridge Club*.

## Kudzu Playhouse has a Murder Mystery Dinner Troop

We perform at local restaurants.

We would love to add you to our email list so we could notify you when we have scheduled a show.

Kudzu Playhouse needs people to work in the concession stand and take tickets at each show. If you would like to be a volunteer, please call the theatre at 770-594-1020 . We would love to have you be a part of the theatre.

## We all need to support the arts, . . .

Times are tough. People are losing their jobs. Homes are being sold at lower prices. Stocks are sinking. Stores are closing. Non-profits are struggling. So why do we need to worry about the arts?

Some think, "We can live for a while without opera, symphony, theatre, and other art forms." After all, we have to buy food and pay for gas. But, think about it some more. What makes a city a desirable place for business and growth? Education, transportation and cultural arts.

Please support your local theatre companies. There are so many of them doing a wonderful job, working their hearts out for so little money. If they disappear, and some have gone out of business already, we will have suffered a loss that will take longer to rebuild than many corporate losses.

Our budget, for example, is completely dependent on ticket sales and contributions.

We appreciate you coming to Kudzu Playhouse today and we hope you will continue to support the local arts. You are greatly needed. Come again and bring a friend. We hope we are as important to you as you are to us.

Ways you can help:

- Buy Season Tickets
- Donate Money
- Come see our shows
- Bring friends to see shows

## Special Shows coming to Kudzu in 2010

### *A Rail Tale*

**World Premier of a new play by Candy Cain Spahr**

**April 30-May 23, 2010**

As a new century dawns, eight people, each with their own dreams and uncertainties for the future, board a luxury steam locomotive bound from Boston to Detroit. Mankind's old foes—greed, deceit and suspicion—accompany the travelers. A mystery looms large. Soon all aboard the train are pulled into a web of intrigue. *A Rail Tale* is set during the golden age of railroads, as this growing industrial nation welcomes the 20th century. A two-act period piece, it weaves humor with the social history of the times.

### *Knock 'em Dead*

**Brought to us by Gypsy Theatre Company**

**October 15-November 7, 2010**

[www.GypsyTheatreCompany.biz](http://www.GypsyTheatreCompany.biz)

If you like "Clue," the game, this is the perfect play for you. The play is set on a dark stormy night at a hole-in-the-wall club: Vinnie's Belly Laugh. A group of performers come together for a talent competition with deadly results as one of them turns out to be a murderer. The audience gets involved and during intermission they are encouraged to talk to the over-the-top characters including a smarmy MC, a baton-twirling cheerleader, an overbearing comedienne, a German jazz singer, a not-so-good ventriloquist, an ego-tistical hypnotist and a drag queen with a lip-synching dog, to help determine one of the six possible endings of the play.

**2010**

**Kudzu Kidz**

**2010**

**SUMMER DRAMA CAMPS**

For information or to register for these classes, call **770-594-1020**.

**Ages 6-9** June 7-11, June 21-25, July 12-16, and July 26-30

**Ages 10-14** June 14-18, June 28-July 2, July 19-23 and August 2-6

No camp the week of June 29-July 3

Through creative dramatics, theatre games, character development, improvisational scenes and simple scripts written by the students or developed from popular tales, the students will learn about playing different characters and memorization. A final stage performance for family and friends concludes the creative drama class.

The cost is \$200.00 per camper for 1 week, Monday –Friday, 10 am-3 pm

The class will be limited to 20 students

To hold a space a \$50.00 non-refundable deposit (Toward camp fee) is required.

**770-594-1020**

**SPRING BREAK CAMP**

**April 5-9 for ages 6-10 from 10am-3pm**

Campers will see a performance on Thursday and their performance will be on Friday.

**\$200.00 CALL 770-594-1020 TO REGISTER**

**OUR EDUCATIONAL PURPOSE**

Children who participate in the arts learn skills they will value throughout their lives, in school, in work and in play. In addition to developing artistic skills, they learn creative thinking, communication, and they have a chance to practice cooperation, teamwork and self-motivation. This balanced approach encourages children to develop their unique talents and fosters self-confidence.

**Classes and Camps and Theatre Tickets,**  
(from one to a whole season) make great gifts!

It has gotten so expensive to mail information! We are developing an email list so that we can send announcements when shows are going to open and when we have information to pass along. We will never sell or share your email address. Please let us know if you want to be on our list.



kudzuplayhouse@aol.com





## ***Restaurant Partners: 2010***

Kudzu Playhouse proudly announces 2010 Restaurant Partners. These establishments have agreed to extend a 20% discount (of all **entrees only**) to our patrons when they dine with them before or after Kudzu performances. Simply call the restaurant of your choice to make reservations, inform them that you are taking advantage of the Kudzu Playhouse discount, and then show your theatre tickets) to your server upon arrival. Please note that you must have your tickets with you at the restaurant, which requires non-subscribers to pick up theatre tickets in advance or buy tickets online.

### **The Fickle Pickle**

1085 Canton Street, Roswell, Ga. 30075  
770-650-9838  
[www.ficklepicklecafe.com](http://www.ficklepicklecafe.com)

### **Pastis**

928 Canton Street, Roswell, Ga. 30075  
770-640-3870  
[www.roswellpastis.com](http://www.roswellpastis.com)

### **Peachtree Diner**

915 Holcomb Bridge Road, Roswell, Ga. 30076  
770-993-0299  
[www.peachtreediner.com](http://www.peachtreediner.com)

### **Relish**

590 Mimosa Blvd, Roswell, Ga. 30075  
770-650-7877  
[www.relishgoodfood.com](http://www.relishgoodfood.com)

### **Taste Restaurant and Wine Shop**

1132 Canton Street, Roswell, Ga. 30075  
770-817-0202  
[www.tasteofroswell.com](http://www.tasteofroswell.com)



**Kudzu Playhouse, 10743 Alpharetta Highway, Roswell, GA 30076**  
**Kudzu Family Playhouse, 10743 Alpharetta Highway, Roswell, Ga. 30076**  
**Kudzu Sprouts, 10743 Alpharetta Highway, Roswell, Ga 30076**  
770-594-1020 Tel      770-594-1318 Fax  
[www.kudzuplayhouse.org](http://www.kudzuplayhouse.org)  
E-mail us at [kudzuplayhouse@aol.com](mailto:kudzuplayhouse@aol.com)